



FIERY WIDE FORMAT PRODUCTS

Fiery® XF Proofing

Precision RIP and Color Management
Workflow for Proofing and Packaging



The Future-proof Investment When Color Quality and Productivity Matter

Fiery® XF Version 5, the flexible and scalable precision RIP and color management workflow for proofing, package prototyping and fine art printing, streamlines your print production with customizable automated workflows from job creation to proofing and verification.

Accurate color management by measurements, with advanced spot- and process-color optimization, enables you to easily achieve precise, predictable and repeatable contract proofs.

Automated workflows eliminate touch points and remove the need for manual job submission, saving operators time and reducing error rates. A fully customizable user interface allows you to tailor the application to each operator's tasks and skill set.

Precise, Predictable and Repeatable Contract Proofs

Advanced spot- and process-color optimization, removes the need for time-consuming trial and error color profile correction or complicated device link profiles and gives you best possible color output each and every time.

The colorimetric estimation of spot color accuracy for specific printer/media combinations enables a data-driven printer/media selection for the best match, and clear color communication by the numbers.

Support for HKS, TOYO, PANTONE® and the PANTONE Plus library, with 336 new colors, ensures the best possible reproduction, no matter what spot color the designer picks.

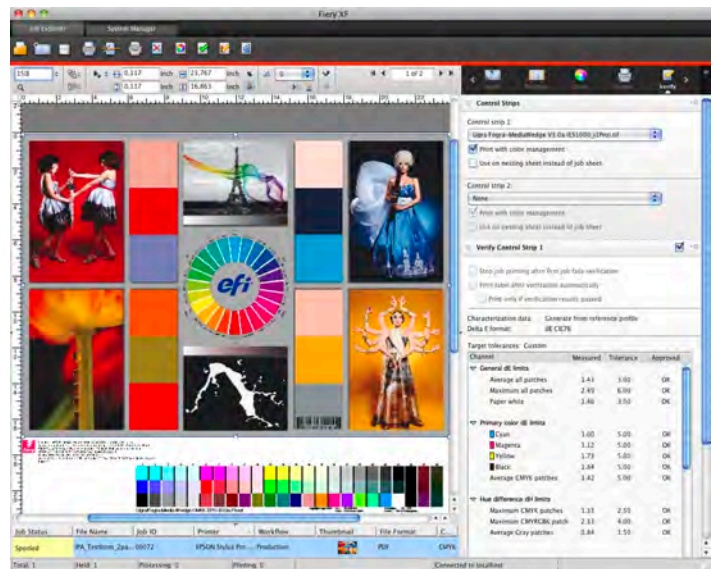
Fiery XF comes with hundreds of pre-defined profiles for specific media and printer combinations for instant results out of the box.

To achieve even greater precision and flexibility, combine Fiery XF with the Color Profiler Option to create precise media or reference profiles, including device links. In addition, a sophisticated visual editor provides a true WYSIWYG experience and makes visual color profile editing a breeze.

Ahead of the Curve with the Latest Industry Standards

To minimize the differences between Xrite measurement devices and to ensure highest data exchange quality, all Xrite and EFI devices make use of the new XRGB standard. Implementation of M0, M1 (D50) and M2 (UV cut) measurement modes allows ISO 13655-compliant measurements for the best color match under the latest industry-standard viewing conditions. Coupled with the Fiery XF's new Ambient Light Adaption, this offers a perfect match in the final viewing environment.

Fiery XF Proofing Version 5 includes the Color Verifier Option that allows you to certify proofs compliant to industry standards like ISO, G7 or FOGRA PSD as well as user-defined standards. This Option also supports



Fiery XF Proofing Version 5 supports the most common control strips and reports measurement results in the main window for fast and easy process control.

job optimization based on standard wedges, or the EFI Dynamic Media Wedge that monitors all image relevant spot- and process-colors like flesh tones or spot colors to ensure color consistency.

Improve Compatibility and Color Communication with Customers and Vendors in your Supply Chain

Over 70,000 registered EFI inkjet RIP licenses worldwide mean your Fiery XF system will be compatible with the largest user base in the industry, which makes color communication and exchanges of profiles, base linearization and parameters with the complete supply chain easier



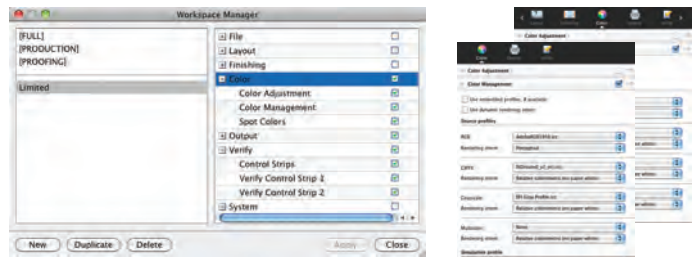
than ever. Plus, this large base of experienced users facilitates fast staffing and training.

Fiery XF contains a remote-proof container functionality that allows you package all print-relevant job parameters and send them to any of the tens of thousands of installed sites to enable accurate remote proofing worldwide. You can even fully automate and monitor this process with Fiery Web Control Center.

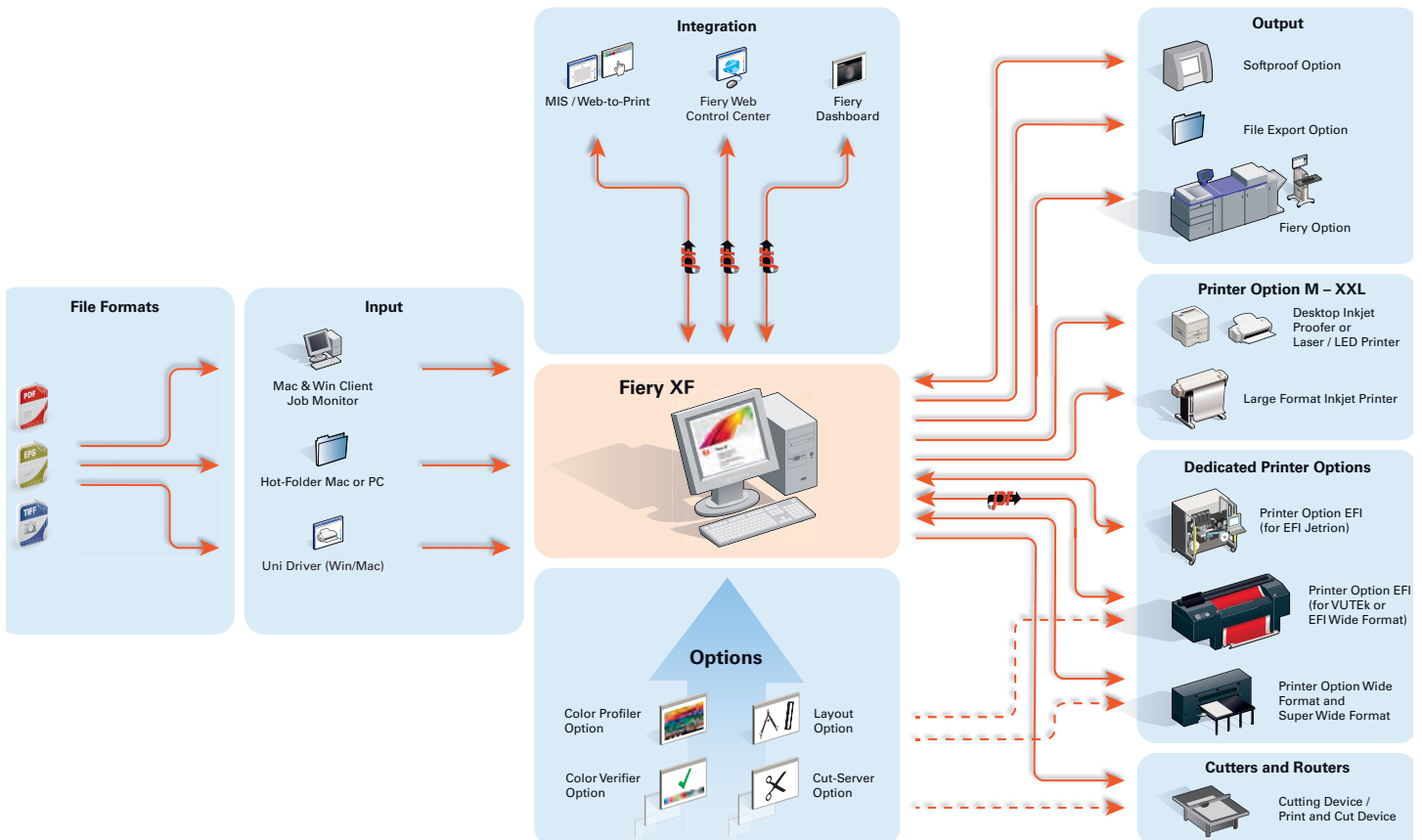
Technology that Makes the Difference

The Fiery XF print driver technology eliminates artifacts and ensures smooth and consistent quality on more than 450 supported printers — from desktop to superwide format. User-selectable print modes allow you to use different ink sets and screens, providing the best possible output behavior for fine-art photo prints, contract proofs, packaging prototyping to high-end half-tone simulation.

Highest level of file integrity, exact handling of transparencies, overprints and handling of all PDF codes created by Adobe® products is ensured due to the integration of the latest Adobe PDF Print Engine version 2.6 and passing industry's toughest PDF tests speaks for itself.



Fiery XF's user interface can be customized to match each operator's tasks and skill set.



For a list of supported printers or cutters and available product options, please visit: www.EFI.com/FieryXF/ Options • www.EFI.com/FieryXF/Printers • www.EFI.com/FieryXF/Cutters

FIERY WIDE FORMAT PRODUCTS

Flexible, Scalable and Future-proof Investment

An EFI software maintenance and support agreement, included for the first year with your purchase, provides an ongoing stream of software releases, including the latest device drivers, plus all minor and major product upgrades, at a consistent and cost-effective charge.

As new industry standards, reference color space definitions, and measurement devices become available, you receive support for this ever-changing world of color management

technology as part of the renewing software maintenance contract.

The modular software architecture of Fiery XF allows you to add options such as print drivers or advanced color features to grow according to changing business needs. Contact EFI or your local reseller to purchase options listed below.



Color Profiler Option	Provides ICC-based tools for professional creation of ICC and device link profiles based on the renowned Fiery Color Profiler Suite.
Production Option	Transforms the large-format / wide format printer into a fast and efficient production device by functions, such as tiling, step & repeat, color adjustment and clean color.
Cut Server 2.0 Option	Offers a comprehensive cutting solution that drives more than 1,200 vinyl cutters and routing tables from industry-leading partners..
Cut Marks Option	Completes and speeds up the production process by supporting all industry standard cutting and finishing marks and methods.
Layout Option	Increase productivity, reduce waste, save time and costs by eliminating errors with advanced layout features, targeted specifically at users of large-format digital printers.
Softproof Option	Highly precise softproofs and on-screen certification in conjunction with the Caddon Can:View vieweing booth with integrated and hardware calibrated Fogra Class A display.
Dot Creator Option	Outputs contone data as screened prints or proofs to simulate the AM screening characteristics of the final run.
One Bit Option	Allows users to proof the screening of the final run by using the screen data created by the film setter or plate setter RIP.
Printer Driver Options	Printer Options support a wide range of more than 400 inkjet, LED and laser printers of various printer vendors.



303 Velocity Way
Foster City, CA 94404
650-357-3500
www.efi.com

Auto-Count, BioVu, BioWare, ColorWise, Command WorkStation, Digital StoreFront, DocBuilder, DocBuilder Pro, DocStream, EDOX, the EFI logo, Electronics For Imaging, Fabrivu, Fiery, the Fiery logo, Inkware, Jetrion, MicroPress, OneFlow, PressVu, Printellect, PrinterSite, PrintFlow, PrintMe, PrintSmith Site, Prograph, RIP-While-Print, UltraVu and VUTEK are registered trademarks of Electronics For Imaging, Inc. in the U.S. and/or certain other countries. BESTColor is a registered trademark of Electronics For Imaging GmbH in the U.S. The APPS logo, AutoCal, Balance, ColorPASS, Dynamic Wedge, EFI, Estimate, Fast-4, Fiery Driven, the Fiery Driven logo, Fiery Link, Fiery Prints, the Fiery Prints logo, Fiery Spark, FreeForm, Hagen, the Jetrion logo, Logic, Pace, Printcafe, the PrintMe logo, PrintSmith, Print to Win, PSI, PSI Flexo, Rastek, the Rastek logo, RIPChips, SendMe, Splash, Spot-On, UltraPress, UltraTex, UV Series 50, VisualCal, the VUTEK logo and WebTools are trademarks of Electronics For Imaging, Inc. in the U.S. and/or certain other countries. Best, the Best logo, Colorproof, PhotoXposure, Remoteproof, and Screenproof are trademarks of Electronics For Imaging GmbH in the U.S. and/or certain other countries. All other terms and product names may be trademarks or registered trademarks of their respective owners, and are hereby acknowledged.